

COMMUNICABLE DISEASE NEWSLETTER

A Health Newsletter from the Barry-Eaton District Health Department

Barry-Eaton District HD Communicable Disease

Phone: (517) 541-2641

Fax: (517) 541- 2666

Contact the Barry-Eaton District HD Communicable Disease Division if you are interested in receiving this monthly newsletter electronically or no longer would like to receive it.

NEW PRIMER FOR PROVIDERS ON MICHIGAN'S HIV LAWS

Since 1986, the Michigan Legislature has passed a number of statutes regarding human immunodeficiency virus (HIV/AIDS), hepatitis, and other infectious agents. These statutes relate to testing, informed consent, contact notification, and confidentiality, and impose duties on health care professionals providing testing, treatment, and care to people who are, or may be, living with HIV.

Bureau of HIV and STI Programs has created a new document, [Michigan HIV Laws: How They Affect Physicians, Local Health Departments, Community Based Organizations, and Other Health Care Entities and Providers](#), that describes the content and nuances of these laws, along with specific citations referencing Michigan's Public Health Code.

MICHIGAN PREP CAMPAIGN LAUNCHING IN 2024

Michigan is launching a grassroots marketing campaign to prevent the spread of HIV and empower Michiganders to learn more about pre-exposure prophylaxis (PrEP). This initiative, titled "MIPrEP. MIChoice." shines a spotlight on real stories from real people across Michigan who are using PrEP to prevent the spread of HIV. While increases in PrEP utilization here in Michigan continue, there is still unmet need in our communities, especially communities of color. Michigan currently ranks 41st in the nation in terms of PrEP Coverage for those with indications based on CDC estimates. The campaign highlights nine remarkable individuals from diverse backgrounds with their own reasons on why they use PrEP. Each personal story represents another step towards ending the stigma around HIV and celebrates the diversity, resilience, and empowerment of Michiganders. The multi-media campaign will feature digital, social media, audio streaming, magazine ads, and posters and palm cards will be placed in bars, restaurants, beauty salons and nail salons throughout Michigan. The campaign will launch in mid-January. In February, posters and palm cards will be available in SHOARS for partners to order. To learn more about PrEP and the "MIPrEP. MIChoice." campaign, visit [Michigan.gov/MIPrEP](https://www.michigan.gov/MIPrEP).

MICHIGAN PUBLIC HEALTH RESPONDS TO VACCINE-PREVENTABLE DISEASES

Recently, local health departments including the Barry-Eaton District Health Department, have been investigating cases of pertussis and chickenpox among students. Read the complete article, "It's 5pm the Day Before a Holiday – Michigan Public Health Responds to Vaccine-Preventable Diseases", in the Guardian of Public Health – December 2023 publication:

<https://content.govdelivery.com/accounts/MIDHHS/bulletins/37ed1e5>.

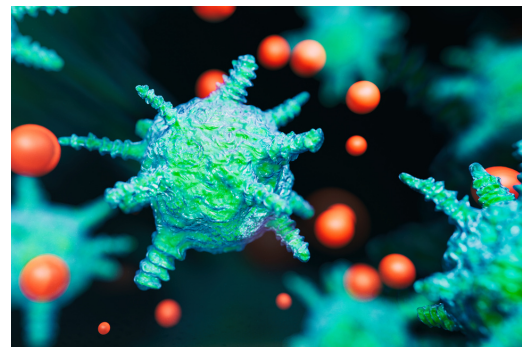
Health care providers can help stop the spread of these and other preventable diseases by regularly stressing the importance of routine immunizations to prevent diseases and decrease outbreaks. These outbreaks can lead to hospitalizations, disruptions of school and childcare, and can place an unwarranted burden on the health care system.

2024 MICHIGAN COMMUNICABLE DISEASE SURVEILLANCE AND REPORTING CHANGES

The updated 2024 Reportable Diseases in Michigan list is now available. This is Michigan's official list of mandatory reportable communicable disease conditions as described by the Michigan Communicable Disease Rules [Public Act 368 of 1978, 333.5111]. These changes were officially adopted January 1, 2024.

Modifications to Existing Conditions on the Michigan Reportable Disease List

- **Brucellosis (*Brucella abortus*, *melitensis*, *suis*, and *canis*):** specified the *Brucella* species that should be reported. Due to taxonomic **updates** to the *Brucella* genus, not all species need to be reported.
- **Carbapenemase-Producing Organisms (CPO):** expanded from Carbapenemase Producing-Carbapenem Resistant Enterobacterales (CP-CRE) to now include reporting of any carbapenemase-producing culture-independent diagnostic test (CIDT).
- **Chlamydial infections (all sites – genital, rectal, and pharyngeal, Trachoma, Lymphogranuloma venereum (LGV)) (*Chlamydia trachomatis*):** specified that *Chlamydia* infections from all sites are reportable, adding rectal and pharyngeal sites to the list.
- **Coccidioidomycosis (*Coccidioides* species):** expanded *Coccidioides immitis* to all *Coccidioides* species to match national reporting requirements.
- **Hepatitis B virus:** added total antibody to hepatitis B core antigen (total anti-HBc) as a reportable test result for hepatitis B.
- **Meningococcal Disease, sterile sites (*Neisseria meningitidis*) (4):** changed footnote from (5) to (4).
- **Pediatric influenza mortality:** clarified pediatric refers to those < 18 years of age.
- **Respiratory syncytial virus (RSV) pediatric mortality (< 5 years of age):** Added condition.
- **Syphilis (*Treponema pallidum*) (for any reactive result, report all associated syphilis tests, including negative results) (6):** added clarification for reporting all associated syphilis tests, including negative results, for any reactive result.
- **Yersiniosis (Non-pestis *Yersinia* species):** expanded *Yersinia enterocolitica* to all *Yersinia* non-pestis species.
- **Legend/Footnotes:**
 - ~(5) clarified that a specimen and/or isolate may be submitted
 - ~(6) removed 'if available' from report pregnancy status



The complete list is available in two formats:

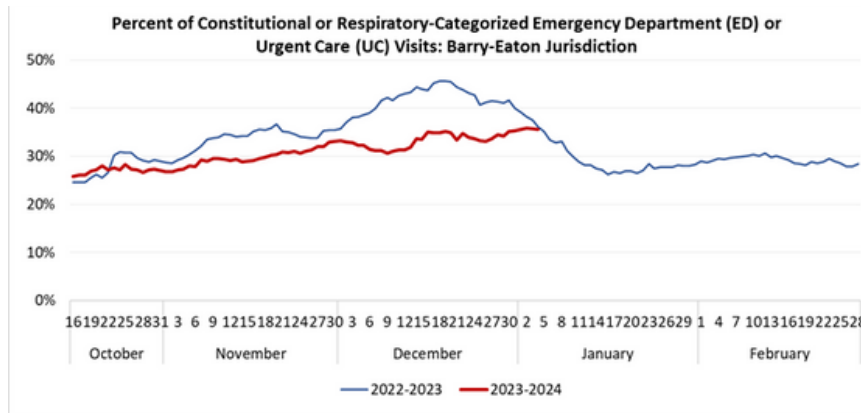
- Organized by Pathogen ([Color Print](#) or [Black & White Print](#))
- Organized by Condition ([Color Print](#) or [Black & White Print](#))

Health Care Professional’s Guide to Disease Reporting in Michigan Changes

- Updated Reportable Disease Lists by Condition (page 6) and by Pathogen (page 11) to reflect 2024 changes as described above.
- Updated box of suspect isolates that must be forwarded to MDHHS Bureau of Labs to reflect 2024 changes described above (page 15) and added footnote to clarify reporting requirements.
- Removed 'if available' from reporting pregnancy status for HIV and STI testing (page 8) and Hepatitis testing (page 14).
- Updated reporting requirements for Carbapenemase-Producing Organisms (CPO) (page 12).
- Added total antibody to hepatitis B core antigen (total anti-HBc) to list of reportable test results for hepatitis B virus (page 14).

Revised: [2024 Healthcare Professional's Guide to Disease Reporting in Michigan \(MDHHS Brick Book\)](#)

SYNDROMIC SURVEILLANCE



Syndrome	Example Complaints
Constitutional	Fever, chills, body ache, flu symptoms, weakness, fatigue, anorexia, malaise
Respiratory	Nose, throat or lung problems, sinusitis, cold symptoms, bronchitis, cough, asthma, COPD, sore throat

Emergency department (ED) or urgent care (UC) visits with respiratory or constitutional chief complaints are steadily on the rise in Barry-Eaton jurisdiction and have not yet reached last season’s peak. Data are from the Michigan Syndromic Surveillance System (MSSS) as of 01/04/2024. Note that changes in care-seeking behavior over the holidays may impact the data.

Seasonal Influenza Update: Influenza-like illness cases have not yet reached last season’s peak in Barry and Eaton Counties. There was a slight increase during the week of December 10, 2023 but cases have since decreased.

To find the latest BEDHD influenza report, please visit: www.barryeatonhealth.org/wp-content/uploads/2024/01/MMWR_52_2023.pdf.

COVID-19

During the week of December 17, 2023, there were 592 cases of COVID-19 reported in Barry-Eaton jurisdiction. This was a 11.1% increase from the previous week and the highest number of cases seen in the jurisdiction since week of September 4, 2022. Weeks of December 24 and 31 show a dramatic drop. These data are preliminary and may be incomplete due to holiday closures. From week of December 17 to Week of December 24, there was a 14% increase in COVID-19 related hospitalizations in Eaton County and an 19% increase in Barry County.

