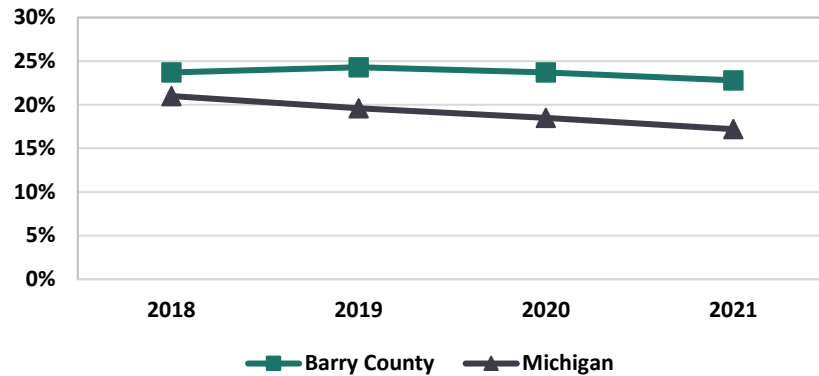




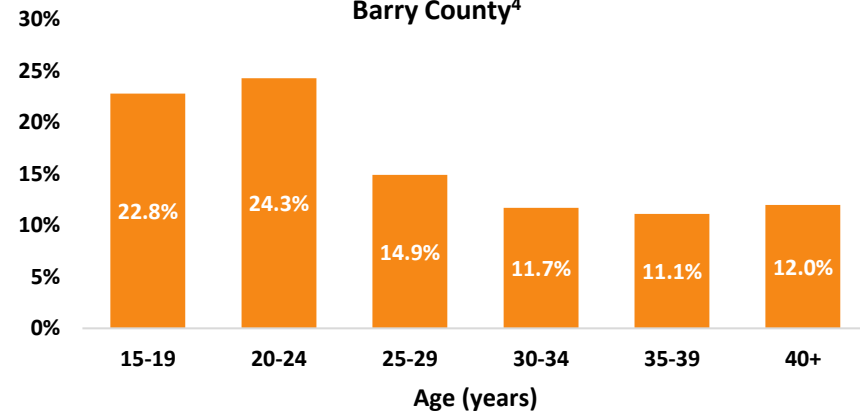
TOBACCO USE: BARRY COUNTY

Percent of Live Births with Maternal Tobacco Use Among Women Age 15-19 Years⁴



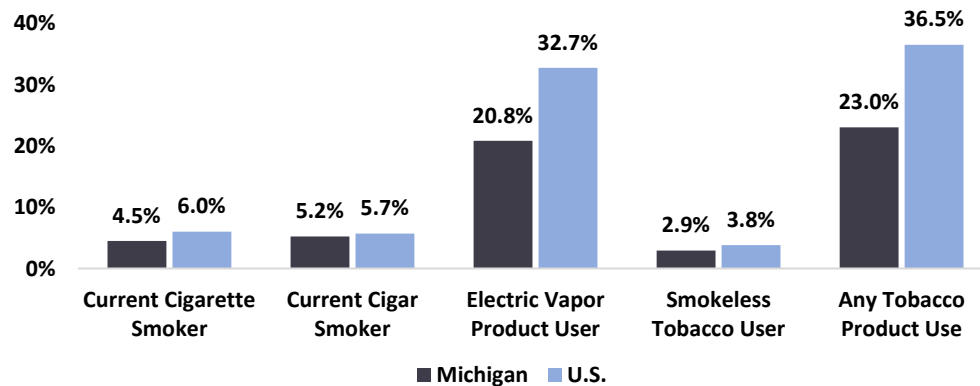
The percent of live births with maternal tobacco use among 15 to 19 year olds has been declining each year from 2019 to 2021 in Michigan and Barry County.⁴ The percentage of live births with maternal tobacco use (ages 15-19 years) has been consistently higher in Barry County than Michigan.

Live Births with Maternal Tobacco Use by Age in 2021, Barry County⁴

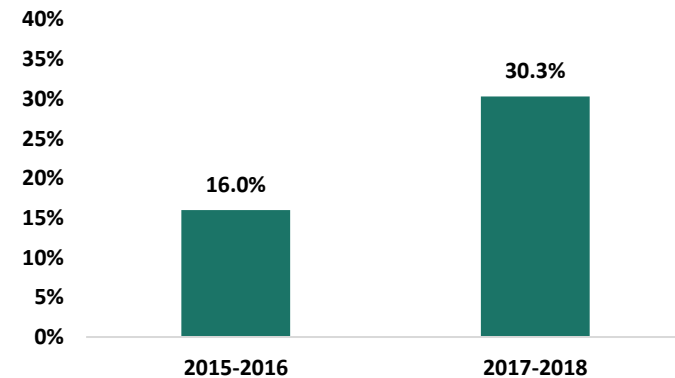


The highest proportion of live births with maternal tobacco use was seen among 20 to 24 year olds in Barry County.⁴ Approximately 24% of 20 to 24 years olds who have a live birth in Barry County used tobacco during pregnancy.

High School Student Tobacco Use, 2019¹



Percent of High School Students Who Used an Electronic Vapor Product During the Past 30 Days, Barry County³

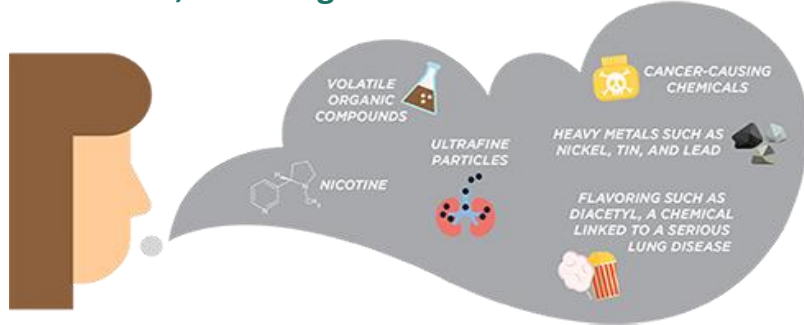


Tobacco Use Risks



Most e-cigarettes contain nicotine which is the addictive drug in cigarettes, cigars, and other tobacco products. Nicotine is highly addictive and can harm adolescent brain development, which continues into the early to mid-20s.²

E-cigarette aerosol can contain potentially harmful substances, including:



- Flavorings in tobacco products make them more appealing to youth.
- E-cigarettes have been the most commonly used tobacco product among youth since 2014.²
- In 2022, it was estimated that 1 out of 30 middle school students and 1 out of 7 high school students reported electronic cigarette use in the past 30 days.²
- Nationally, girls were more likely than boys to use electronic cigarettes in 2022.²

Factors Associated with Tobacco Product Use²:

- Lower socioeconomic status
- Accessibility, availability, and price of tobacco product
- Poor performance in school
- Low self-image or self-esteem
- There is a strong relationship between youth smoking and depression, anxiety, and stress.

Sources:

¹Centers for Disease Control and Prevention. 2019 Youth Risk Behavior Survey Questionnaire. Available at: www.cdc.gov/yrbs. Accessed on December 20, 2022.

²Centers for Disease Control and Prevention. (2022, November 10). *Quick facts on the risks of e-cigarettes for kids, teens, and young adults*. https://www.cdc.gov/tobacco/basic_information/e-cigarettes/Quick-Facts-on-the-Risks-of-E-cigarettes-for-Kids-Teens-and-Young-Adults.html

³Michigan Department of Education. (2022). *Michigan school health survey system*. <https://mdoe.state.mi.us/schoolhealthsurveys/ExternalReports/CountyReportGeneration.aspx>

⁴1989 Michigan Birth Certificate Registry;1990-2021 Geocoded Michigan Birth Certificate Registries. Division for Vital Records & Health Statistics, Michigan Department of Health & Human Services: 5-year estimates

Aurelia Pena, MPH, Epidemiologist
apena@bedhd.org