



Cover Photo Credit: [Maire567](#)



Barry-Eaton District  
Health Department  

---

Be Active • Be Safe • Be Healthy

*2015 Annual Report*



# ***Barry-Eaton District Health Department***

Colette Scrimger, MSW, Health Officer

The Barry-Eaton District Health Department (BEDHD) envisions a future where every resident has the opportunity to live a long, healthy, and active life. How does that future happen? It happens through thoughtful choices at every level – choices by individuals, families, businesses, schools, organizations, and communities to prioritize and take action on health.

Investing in the well-being of communities and making health a priority in comprehensive planning can reduce the number of people overall that get sick, determine how sick they feel, and influence if they die early... or live a long time. The purpose of public health is to promote the health of the population, making sure that people have safe, clean, and healthy places to live, work, and play, and to make sure that diseases and injuries are *prevented* whenever possible.

The BEDHD has made addressing chronic disease an overarching theme of many of its programs and initiatives. We work on four components – **healthy eating, active living, tobacco control, and the built (man-made) environment** – to combat the onset and impact of chronic disease. Through our Community Outreach efforts BEDHD professionals regularly attend municipal meetings and community coalitions to foster connections and encourage actions that protect and enhance the public's health. This networking has proven to be a catalyst for additional partnerships and policy developments across the district. Meaningful community partnerships are the cornerstone of successful and sustainable communities.



## ***2015 Achievements***

- Expansion of the **Pathways to Better Health Program** to serve both Barry and Eaton county residents with chronic diseases
- Submission of materials demonstrating BEDHD's compliance with 100 measures of quality public health services as part of the national **Public Health Accreditation Board (PHAB)** process
- Publication of the **Healthy! Capital Counties** Community Health Assessment ([www.healthycapitalcounties.org](http://www.healthycapitalcounties.org))
- Partnered with the EPA to respond to the most significant residential mercury poisoning and contamination event in district history
- Implementation of the **MyEvolv electronic medical record** system in Eaton Behavioral Health

# Eaton Behavioral Health

Darby Testa, LMSW, Manager

- Served 2 women who have had drug-free births and helped to support 42 moms who have custody or are working on regaining custody of their children in the Women’s Specialty Program.
- Completed Gender-Responsive program assessment with a score of 60/66, demonstrating our advanced care of women.
- Educated all BEDHD staff on the importance of Trauma Informed Care at all levels of service.
- Created a group that is open to the public to encourage sustained addiction recovery and community engagement.
- Implemented MyEvolv electronic medical records to increase accuracy of data and efficiency in record keeping and billing.

Division Activities	County Total
Choices Early Intervention	31
Adult Assessments and Intakes	319
Juvenile Assessments	43
Women’s Specialty Program	46
Peer Support Intakes	39
Eaton County Youth Facility	49
Driver’s License Evaluations	7

# Planning, Promotion, and Evaluation

Anne Klein Barna, MA, Manager

Division Activities	District Total
Municipal Meetings Attended	116
Presentations, Health Fairs, etc.	42
Coalition Meetings Attended	388
Social Media Posts	210
Publications Submitted	53

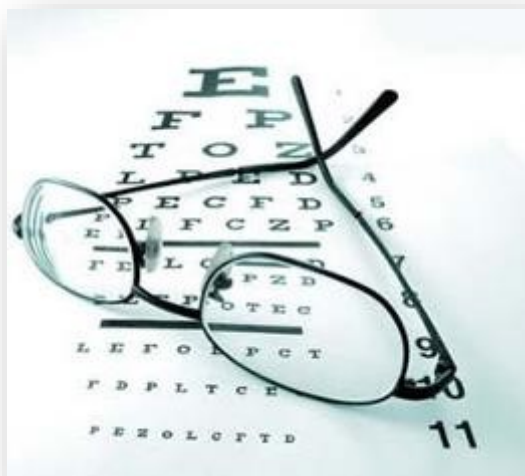
- Completed the 2015 Healthy! Capital Counties Community Health Needs Assessment in partnership with local hospitals and health departments in Ingham and Clinton counties.
- Implemented a Chronic Disease Prevention Program that focused on worksite wellness policy and environmental changes in over a dozen sites around the district.
- Expanded Electronic Benefits Transfer (EBT) to the Dimondale Farmer’s Market so customers with SNAP (Food Stamps) can use those benefits to purchase healthy, local foods.
- Continued the well-received Community Outreach effort to local municipalities and community groups to spread the word about the Health Department and Local Public Health.
- Concluded the second year of a Cancer Prevention grant where we worked with medical and dental providers to improve the referral process to the Michigan Quit Line.
- Crafted and implemented the agency’s Performance Management System to assist with Quality Improvement efforts.
- Provided significant staff support for the agency’s efforts to prepare for National Public Health Accreditation (PHAB).

# Personal & Community Health Services

Suzanne Thuma, MSW, Director

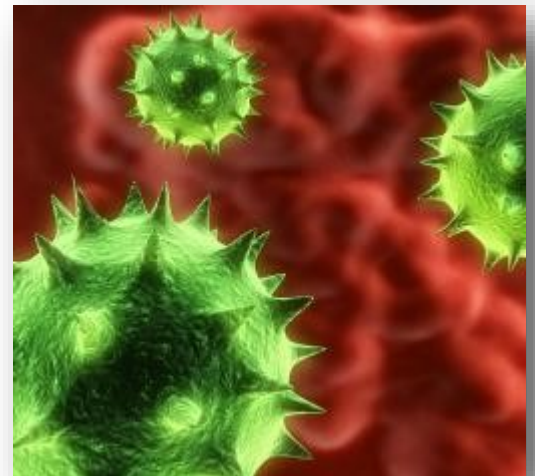
Division Activities	District Total
WIC Caseload (Annual)	2,988
WIC Pregnant Women (Monthly)	290
WIC Kids (Monthly)	1,466
WIC Infant (Monthly)	681
WIC Postpartum (Breastfeeding and Non-breastfeeding)	341
Student Hearing Screenings	7,663
Student Vision Screenings	10,834
Children's Special Healthcare Clients	504
Communicable Disease Investigations	1611
Animal Bite Investigations	143
Sexually Transmitted Disease Case Investigations	640
Tuberculin Skin Tests Administered	396
Flu Vaccine Given	949
Immunizations Given	7,087
Breast and Cervical Cancer Screenings	40
Pathways to Better Health Clients	158

- Due to continued outreach efforts, the Women, Infants, and Children (WIC) caseload has held steady at 92%.
- The Institute for Women's Policy Research (IWPR) has selected Barry-Eaton WIC for a research study on the effects of breastfeeding promotion in WIC local agencies. Barry-Eaton was selected due to our high growth in breastfeeding initiation and duration since 2011.
- WIC's Breastfeeding Peer Counselor Program increased rates of breastfeeding initiation among new mothers, averaging a 10% increase in the last three years.





- County Immunization Report Cards are released quarterly by the Michigan Dept. of Health & Human Services. These rankings rate the best county as “1st”. Barry County increased its Pediatric Immunization Ranking from 48th in September 2014 to 34th in September 2015. Eaton County increased its Pediatric Immunization Ranking as well, from 71st in September 2014 to 61st in September 2015.
- County Rankings for Adolescent Immunizations for Barry County remained steady at 46th overall for FY2015; whereas Eaton County noticed an increase in ranking from 58th in 2014 to 53rd in 2015.
- Children’s Special Health Care staff completed 152 home visits during FY 2015. BEDHD also assisted with 52 new admissions.
- We referred 737 children for additional vision follow-up and 299 children for additional hearing follow-up.
- Forty women received a breast or cervical cancer screening off-site at either Eaton Rapids Medical Center or Barry Community Health Center during 2015. Sixteen new women were enrolled in the Breast and Cervical Cancer Program in 2015. Fourteen women receiving breast and cervical screenings in 2015 have been enrolled in the program for more than 6 years.



# Environmental Health

Regina Young, RS, Director

Division Activities	District Total
Licensed Food Establishments	603
Routine Food Establishment Inspections	981
Temporary Food Service Inspections	115
Public Water Supply Surveys	40
Public Water Supply Permits	5
Private Well Notification Permits	422
Time of Sale Evaluations	1457
Licensed Septage Haulers	6
Septage Inspections	19
Public Pool Inspections	148
Site Evaluations	357
Sewage System Permits	423
Abandoned Wells Plugged	224
Campground Inspections	34
Complaint Investigations (sewage, water, and food only)	68

- Implemented new software and reporting in FY15. Note: Reported information may not be comparable to previous year's report.
- Responded to approximately 18 meth lab-related contamination events.
- Certified over 80 people in food safety management.
- Collected 96 beach water samples from 4 inland beaches.
- Conducted 9 body art inspections and investigated 2 complaints about body art practices.
- Participated in household hazardous waste collection days.
- Partnered with businesses in the community resulting in a 72% increase in radon test kit distribution.
- Responded to a significant residential mercury contamination site.



# Charlotte Dental Center

Operated by *My Community Dental Centers*

- Staffed by two full time dentists.
- Hosted dental students from the University of Michigan nine months of the year.
- Utilized \$2,191 in Dental Access Funding for services to the uninsured.
- Served many adults as part of the new Healthy Michigan Plan who were previously uninsured.

Activities	Total
Patients Served	1980
Number of Office Visits	5645
Patients aged 0– 14	13%
Patients aged 15-20	4%
Patients aged 21 and over	83%



## Finance

Lisa Smith, MSA, Director

### Visit Our Locations

Barry County  
330 W. Woodlawn Ave  
Hastings, MI 49058  
269-945-9516

Eaton County  
1033 Healthcare Dr.  
Charlotte, MI 48813  
517-543-2430

### Visit Our Website

[www.barryeatonhealth.org](http://www.barryeatonhealth.org)

### Like Us On Facebook

[www.facebook.com/barryeatonhealth](http://www.facebook.com/barryeatonhealth)

### FY2015 Budget Expenditures

Personnel	4,430,196
Travel	144,044
Communications	77,236
Supplies	383,385
Equipment	10,000
Contractual	276,275
Other	1,242,257
<b>Total</b>	<b>6,563,393</b>

### FY2015 Budget Revenue

County	1,716,477
Other Sources	1,262,652
Service/Billing	1,386,531
State	2,197,732
<b>Total</b>	<b>6,563,393</b>

***Our Vision Statement***

A community where everyone has the opportunity to live a long, healthy, and active life.

***Our Mission Statement***

Our mission is to protect and enhance health by promoting and providing innovative, community based programs and initiatives.



**Barry-Eaton District**  
**Health Department**

---

Be Active • Be Safe • Be Healthy